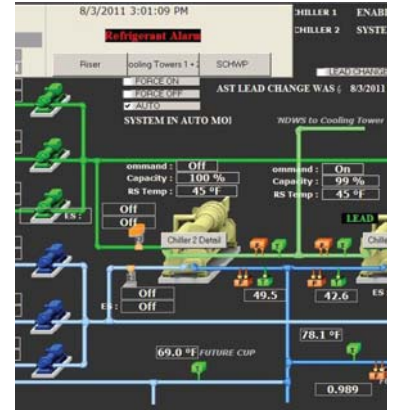


BALA

SELECT CLIENTS

777 South Broad Street
AIG
Ambler Crossing
Armstrong World Industries
Bala Consulting Engineers
BPG Development
Boston Consulting Group
Brandywine Realty Trust
Colorcon
Dranoff Properties
Drexel University
Exeter Property Group
Fox Rothschild
GSA/IRS
Haverford Township
Liberty Property Trust
New Castle County
Pennsylvania State Employees
Credit Union (PSECU)
Rutgers University
SAP America
SDI
Tastybaking Company
Thomson Reuters
William Penn Charter School
XL Insurance



SUSTAINABLE DESIGN EXPERIENCE

“Green” building design has rapidly emerged from a novel practice to a driving force in the design and construction industry. Bala has been engineering and commissioning these projects for over 15 years. Bala’s expertise enhances all types of projects, from new greenfield site buildings to retrofits. We have experience with numerous clients both in the the sustainable design of their newest projects, as well as working with them to upgrade their existing facilities, including projects in LEED-NC, LEED-EB, LEED-CI, LEED-CS, and LEED-S. With over 15 LEED Accredited Professionals on staff and over 100 LEED Certified projects, we bring extensive knowledge of the latest systems and technologies for energy efficiency and environmentally conscious engineering.

SUSTAINABLE STRATEGIES

Intelligent BMS/Energy Monitoring	Daylight Harvesting
High Efficiency HVAC Systems	High Efficiency & Low Power Density Lighting
Increased Ventilation	Intelligent Lighting & Shade Controls
Reduced Refrigerant Usage (No HCFCs)	Reduced Water Usage
CO2 Monitoring & Demand Ventilation	High Performance Building Envelope Evaluations
Measurement & Verification Systems	Sustainable/Renewable Energy

FOR MORE INFORMATION,
PLEASE CONTACT:

Thomas M. Reusche
Executive Vice President
tmr@bala.com

BALA CONSULTING ENGINEERS, INC.
443 SOUTH GULPH ROAD
KING OF PRUSSIA, PA 19406

610 649 8000
610 649 8475 FAX
WWW.BALA.COM